



Wineglass Grazing Ranch Helmville, Montana

Mothering Pasture

<http://WineglassGrazingRanch.com>



Dan Senecal, Broker

Cell - 406/ 439-5414
TOLL FREE - 877/ 439-5414
Email: ds@mt.net

Jeanne Senecal, REALTOR®/GRI

Cell - 406/ 439-0303
TOLL FREE - 888/ 439-0303
Email: jsenecal@mt.net



800 N Benton (Main Office)
795 Front Street (Branch Office)
Helena, MT 59601

<http://montanalandhomes.com>

Mothering Pasture

Price: \$2,944,185

1,962.79 +/- Acres

#297717 & #297718



- Approx 135 +/- Irrigated Meadows
- Water Rights
- Mountains/Views/Trees
- Creeks/Springs
- Timber Rights
- 1/2 Ownership of Mineral rights
- Borders over 2 miles of BLM & State Lands

Leased Land:

- State Sec 16 - 656.88 Acres (81 AUM's)
- State Sec 36 - 633.35 Acres (59 AUM's)
- BLM Lease 8640 Acres (100 AUM's from 7/15/ to 9/30)

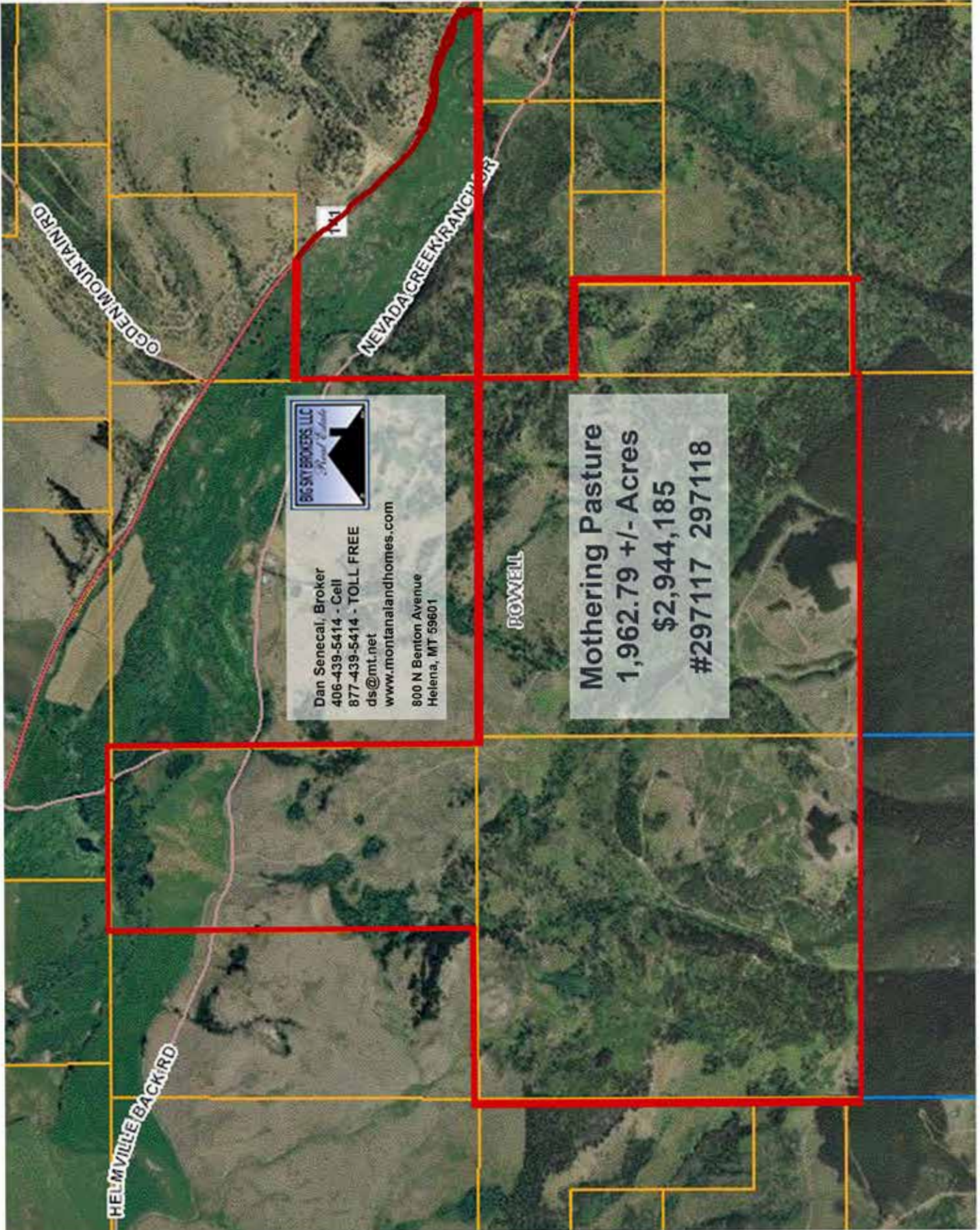


800 N Benton | Helena, MT 59601

<http://montanalandhomes.com>

406-439-5414 - Dan | 406-439-0303 - Jeanne

ds@mt.net | jsenecal@mt.net



Dan Senecal, Broker
406-439-5414 - Cell
877-439-5414 - TOLL FREE
ds@mt.net
www.montanalandhomes.com
800 N Benton Avenue
Helena, MT 59601

Mothering Pasture
1,962.79 +/- Acres
\$2,944,185
#297117 297118

800 N Benton | Helena, MT 59601
<http://montanalandhomes.com>
406-439-5414 - Dan | 406-439-0303 - Jeanne
ds@mt.net | jsenecal@mt.net

**Wineglass Grazing, Inc.
Water Rights – Mothering Pasture - Helmville, MT**

MOTHERING PASTURE:

Stock Water Rights:

143177-00	ST	HALL CREEK	06	12N	10W	MAY 01, 1880
143191-00	ST	UNNAMED TRIBUTARY OF NEVADA CREEK	06	12N	10W	MAY 01, 1880
143193-00	ST	UNNAMED TRIBUTARY OF NEVADA CREEK	07	12N	10W	MAY 01, 1880
143194-00	ST	UNNAMED TRIBUTARY OF NEVADA CREEK	07	12N	10W	MAY 01, 1880
143195-00	ST	UNNAMED TRIBUTARY OF NEVADA CREEK	07	12N	10W	MAY 01, 1880
143196-00	ST	UNNAMED TRIBUTARY OF NEVADA CREEK	08	12N	10W	MAY 01, 1880
143197-00	ST	UNNAMED TRIBUTARY OF NEVADA CREEK	06	12N	10W	MAY 01, 1880
143201-00	ST	UNNAMED TRIBUTARY OF NEVADA CREEK	06	12N	10W	MAY 01, 1880
143203-00	ST	UNNAMED TRIBUTARY OF NEVADA CREEK	06	12N	10W	MAY 01, 1880
143216-00	ST	UNNAMED TRIBUTARY OF NEVADA CREEK	08	12N	10W	MAY 01, 1880
143217-00	ST	UNNAMED TRIBUTARY OF NEVADA CREEK	06	12N	10W	MAY 01, 1880
143218-00	ST	UNNAMED TRIBUTARY OF NEVADA CREEK	07	12N	10W	MAY 01, 1880
98292-00	ST	UNNAMED TRIBUTARY OF NEVADA CREEK	07	12N	10W	
98293-00	ST	HALL CREEK	08	12N	10W	MAY 01, 1880

Irrigation Water Rights:

98301-00	IR	4.55 CFS NAHRGANG CREEK	06	12N	10W	OCT 24, 1892
98299-00	IR	6.25 CFS NAHRGANG CREEK	06	12N	10W	APR 12, 1900
98296-00	IR	1.25 CFS HALL CREEK	08	12N	10W	JUL 11, 1917

Nevada Creek Deceaded Water Rights:

Dual ownership with Mannix Brother's Ranch - 1173 Acres - 89.82%

Wineglass Grazing Ranch Property - 133 Acres - 10.18%

98311-00	IR	5.00 CFS - 200 Miner Inch	04 &	06	12N	10W	June 1, 1869 - #2 Right on Nevada Crk
98310-00	IR	3.75 CFS - 150 Miner Inch	04 &	06	12N	10W	May 1, 1880 - #25 Right on Nevada Crk
98306-00	IR	3.38 CFS NEVADA CR 135 Miner Inch	04 &	06	12N	10W	JUN 01, 1885 - #44 Right on Nevada Crk
98308-00	IR	2.50 CFS Nevada Cr - 100 Miner Inch	04 &	06	12N	10W	June 1, 1890 - #69 Right on Nevada Crk
98309-00	IR	336.60 GPM NEVADA CR- 30 Miner Inch	04 &	06	12N	10W	JUN 01, 1895 - #88 Right on Nevada Crk
98307-00	IR	1.25 CFS NEVADA CR - 50 Miner Inch	04 &	06	12N	10W	NOV 19, 1896 - #92 Right on Nevada Crk
98294-00	IR	6.25 CFS Nevada Cr - 250 Miner Inch	04 &	06	12N	10W	Dec 31, 1938 - High Water Right

School House & Simpson Meadow

200 acre feet contract water for irrigation from Nevada Reservoir - May 1 - October 1